

Please check the examination details below before entering your candidate information

Candidate surname					Other names				
Centre Number					Candidate Number				
Pearson Edexcel Level 1/Level 2 GCSE (9–1)					<div style="display: flex; justify-content: space-between;"> <div style="border: 1px solid black; width: 20px; height: 20px;"></div> <div style="border: 1px solid black; width: 20px; height: 20px;"></div> <div style="border: 1px solid black; width: 20px; height: 20px;"></div> <div style="border: 1px solid black; width: 20px; height: 20px;"></div> <div style="border: 1px solid black; width: 20px; height: 20px;"></div> </div> <div style="display: flex; justify-content: space-between;"> <div style="border: 1px solid black; width: 20px; height: 20px;"></div> <div style="border: 1px solid black; width: 20px; height: 20px;"></div> <div style="border: 1px solid black; width: 20px; height: 20px;"></div> <div style="border: 1px solid black; width: 20px; height: 20px;"></div> </div>				
Tuesday 21 May 2019									
Afternoon (Time: 1 hour 30 minutes)					Paper Reference 1GB0/01				
Geography B Paper 1: Global Geographical Issues									
You must have: Calculator								Total Marks	

Instructions

- Use **black** ink or ball-point pen.
- **Fill in the boxes** at the top of this page with your name, centre number and candidate number.
- Answer **all** questions.
- Answer the questions in the spaces provided
– *there may be more space than you need.*
- Where asked you must **show all your working out** with **your answer clearly identified** at the **end of your solution**.

Information

- The total mark for this paper is 94.
- The marks for **each** question are shown in brackets
– *use this as a guide as to how much time to spend on each question.*
- The marks available for spelling, punctuation, grammar and use of specialist terminology are clearly indicated.

Advice

- Read each question carefully before you start to answer it.
- Try to answer every question.
- Check your answers if you have time at the end.

Turn over ►

P56256A

©2019 Pearson Education Ltd.

1/1/1/1/1/1/1/1/1/1/1




Pearson

SECTION A

Hazardous Earth

Answer ALL questions in this section.

Write your answers in the space provided.

Some questions must be answered with a cross in a box ☒. If you change your mind about an answer, put a line through the box ☒ and then mark your new answer with a cross ☒.

- 1 (a) Study Figure 1 which shows a climate graph for Timbuktu, Mali located 16°N of the equator.

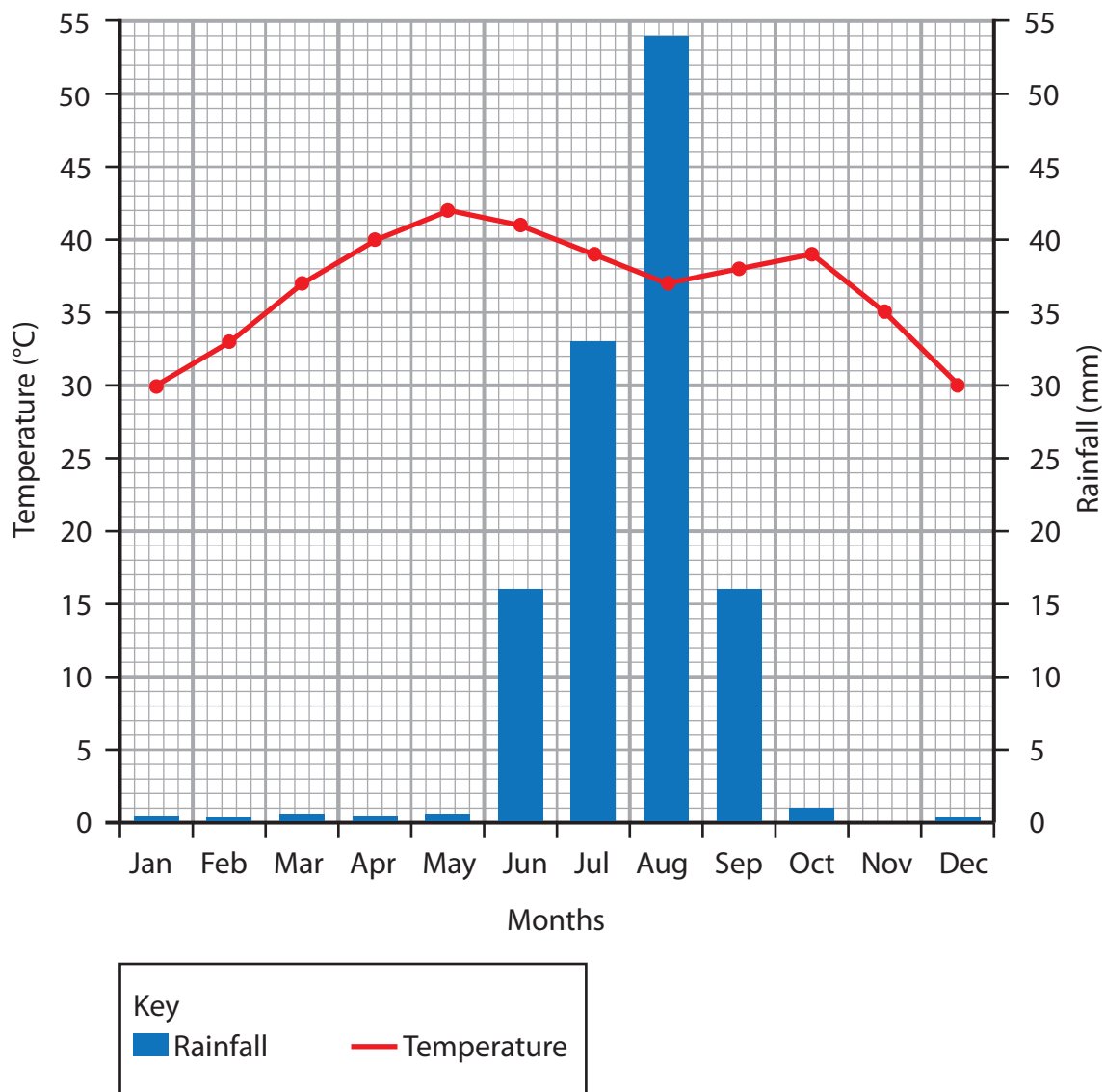


Figure 1



(i) Identify which **one** of the following describes Timbuktu's climate.

(1)

- ☐ **A** Temperature is highest in November
- ☐ **B** August is the wettest month
- ☐ **C** October is the driest month
- ☐ **D** Temperature decreases from January to May

(ii) Calculate the annual temperature range in Timbuktu.

(1)

..... °C

(b) Explain **one** reason why some areas are arid (have low rainfall).

(2)

.....

.....

.....

.....



P 5 6 2 5 6 A 0 3 2 8

(c) Analyse the data in Figure 2.

Name of tropical cyclone	Location and date	Economic cost (US\$ billions)	Number of deaths
Hurricane Katrina	Caribbean / USA August 2005	108	1,800
Typhoon Haiyan	South East Asia November 2013	3	7,200

Figure 2

Selected data for two tropical cyclones

- (i) Calculate the ratio of the number of deaths between the two tropical cyclones.

(1)

- (ii) Describe how social media could be used to record the impact of a tropical cyclone.

(2)

- (iii) Explain **one** reason why the economic cost of tropical cyclones varies.

(3)



(d) Study Figure 3 which shows four projections about sea level rise from 2020 to 2100.

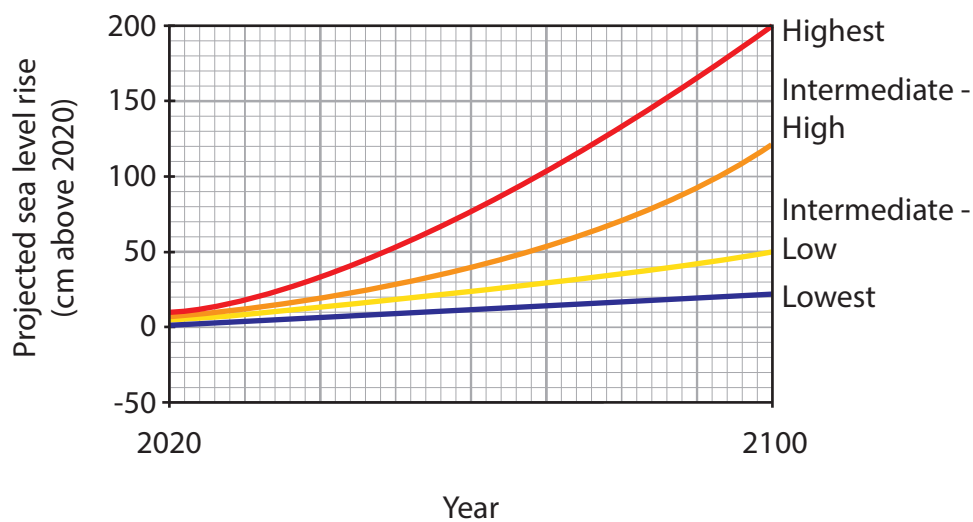


Figure 3

(i) Compare the highest and the lowest sea level projections.

(2)

.....

.....

.....

.....

(ii) Using data from Figure 3 explain **two** reasons for the range of projections shown.

(4)

1

.....

.....

.....

.....

2

.....

.....

.....

.....



P 5 6 2 5 6 A 0 5 2 8

(e) Explain **one** way in which historical records provide evidence of past climate change.

(2)

.....

.....

.....

.....

DO NOT WRITE IN THIS AREA

DO NOT WRITE IN THIS AREA

DO NOT WRITE IN THIS AREA

DO NOT WRITE IN THIS AREA

DO NOT WRITE IN THIS AREA

DO NOT WRITE IN THIS AREA



(f) Study Figure 4 which shows Iceland's location on the Mid-Atlantic Ridge.

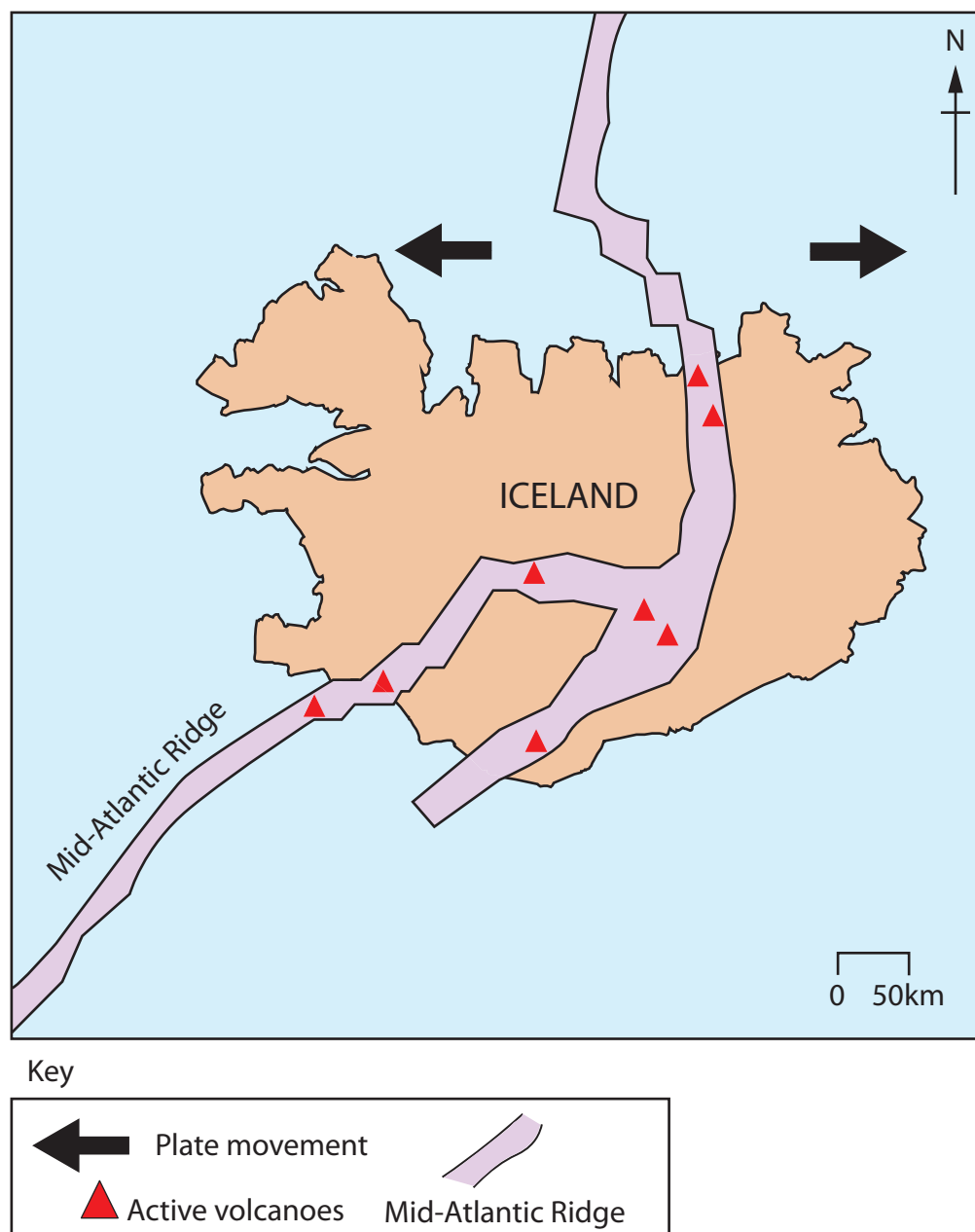


Figure 4

Identify which **one** of the following is the best description of Iceland's tectonic location.

(1)

- ☐ A on a convergent boundary
- ☐ B on a divergent boundary
- ☐ C on a continental plate
- ☐ D on a conservative boundary



P 5 6 2 5 6 A 0 7 2 8

(g) Explain **one** difference between the type of volcanoes found at divergent and convergent plate boundaries.

(3)

.....

.....

.....

.....

.....

.....

DO NOT WRITE IN THIS AREA

DO NOT WRITE IN THIS AREA

DO NOT WRITE IN THIS AREA

DO NOT WRITE IN THIS AREA

DO NOT WRITE IN THIS AREA

DO NOT WRITE IN THIS AREA



(8)

Named emerging or developing country



DO NOT WRITE IN THIS AREA

DO NOT WRITE IN THIS AREA

(Total for Question 1 = 30 marks)

TOTAL FOR SECTION A = 30 MARKS

DO NOT WRITE IN THIS AREA

DO NOT WRITE IN THIS AREA

DO NOT WRITE IN THIS AREA

DO NOT WRITE IN THIS AREA



SECTION B

Development Dynamics

Answer ALL questions in this section.

Write your answers in the space provided.

Some questions must be answered with a cross in a box ☒. If you change your mind about an answer, put a line through the box ☒ and then mark your new answer with a cross ☒.

Spelling, punctuation, grammar and the use of specialist terminology will be assessed in 2(g).

- 2 (a) (i) Identify which **one** of the following is a definition of **fertility rates**.

(1)

- ☐ A The average number of children born per woman (in a country)
- ☐ B The number of deaths per 1000 people in a year
- ☐ C The percentage of children in a country under the age of 15
- ☐ D The number of children per 1000 live births who die before their first birthday

- (ii) Explain **one** way in which economic development is measured.

(2)

.....

.....

.....

.....



P 5 6 2 5 6 A 0 1 1 2 8

(b) Study Figure 5 which is a choropleth map showing an index of political corruption, 2016.

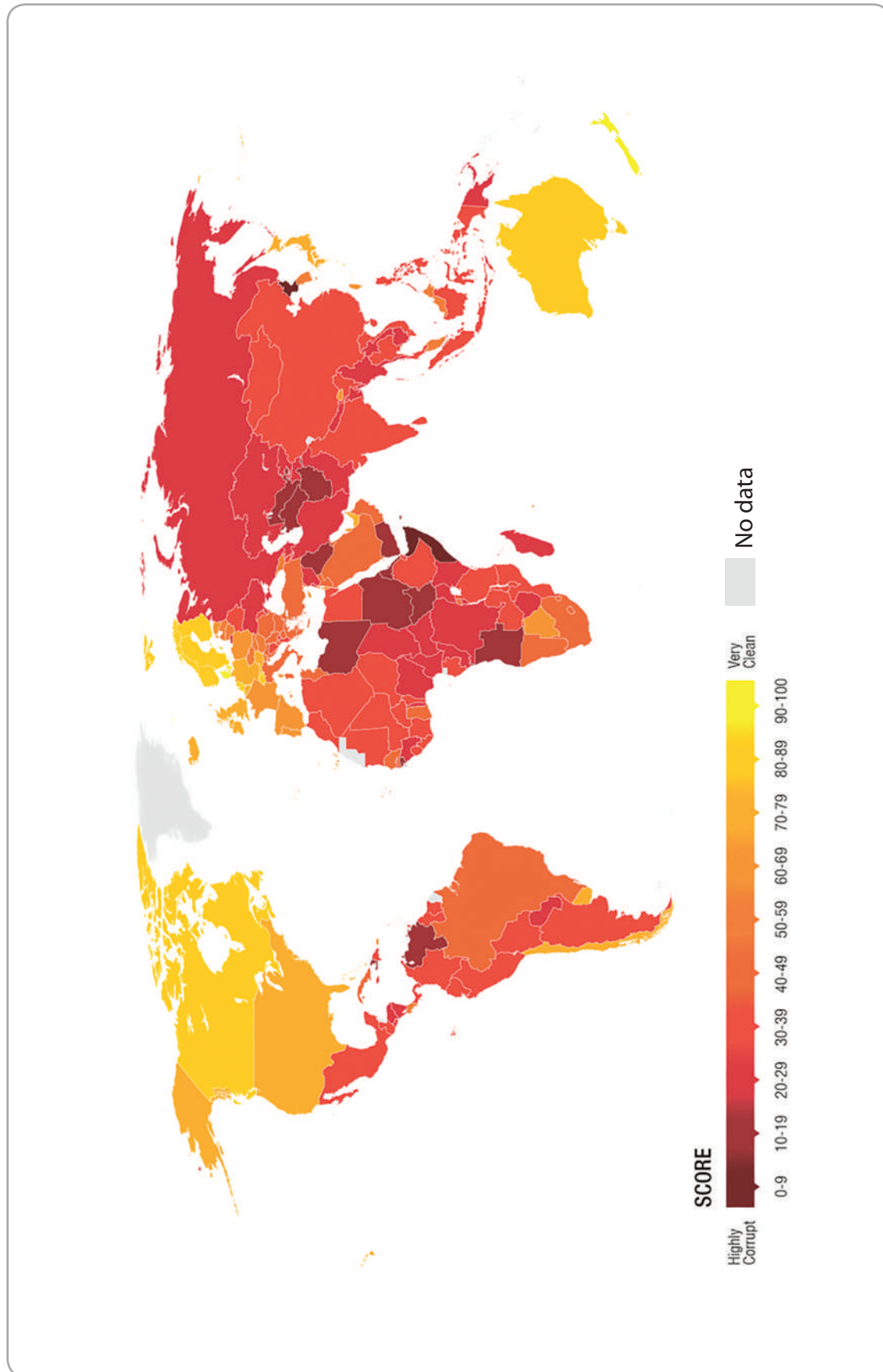


Figure 5



(i) Identify which **one** of the following countries is the least corrupt.

(1)

- ☐ **A** Russia
- ☐ **B** China
- ☐ **C** Australia
- ☐ **D** India

(ii) Figure 5 is a choropleth map. State **two** disadvantages of this method of data presentation.

(2)

- 1
- 2

(iii) Suggest **one** way in which systems of governance can cause inequalities.

(3)

-
-
-
-
-
-



P 5 6 2 5 6 A 0 1 3 2 8

(c) Analyse Figure 6a and Figure 6b which show the population pyramid of India for 2019 (Figure 6a) and the projected population pyramid for 2050 (Figure 6b).

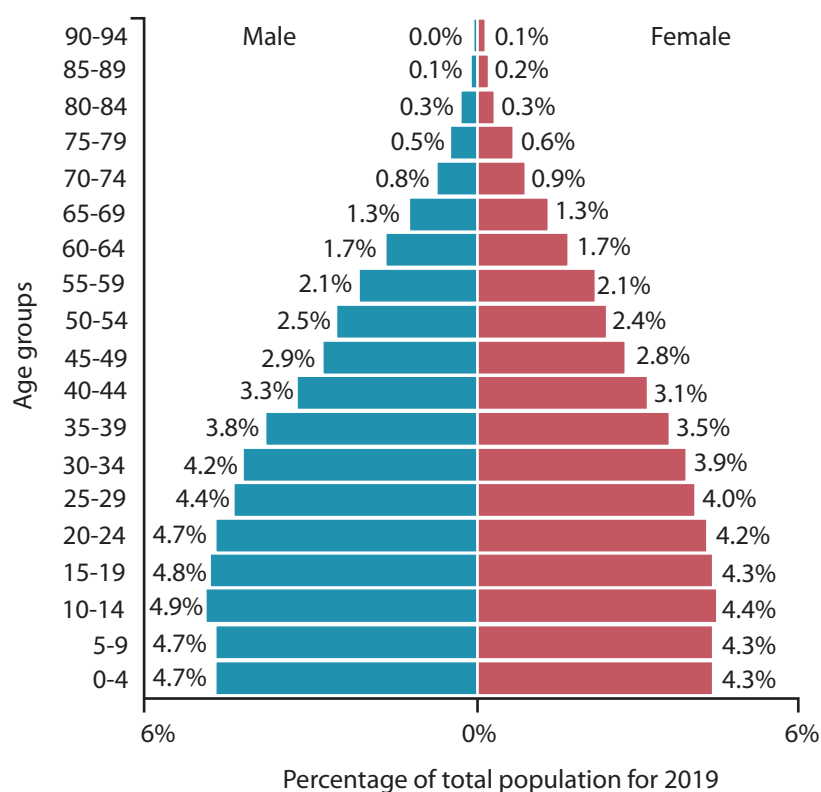


Figure 6a

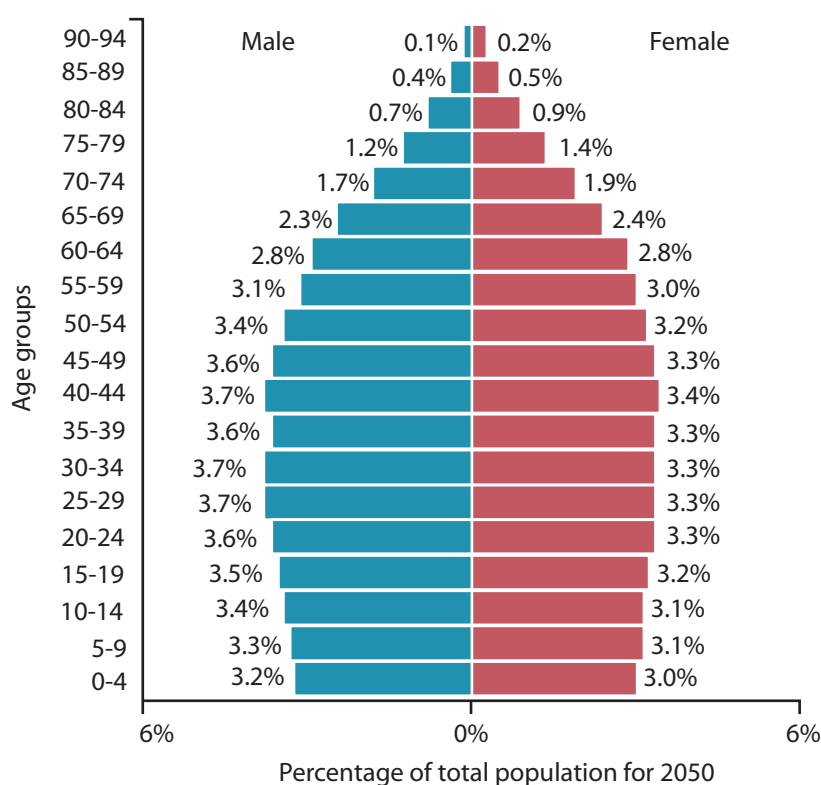


Figure 6b



(i) Identify the age group with the highest population % in 2019.

(1)

.....

(ii) Calculate the total percentage of young dependents (0 to 14) in 2050.

(1)

..... %

(iii) Compare these population pyramids.

(3)

.....

.....

.....

.....

.....

.....



P 5 6 2 5 6 A 0 1 5 2 8

(d) Explain **one** disadvantage of intermediate technology.

(2)

.....

.....

.....

.....

(e) Explain **one** way in which high levels of Foreign Direct Investment (FDI) might benefit an emerging country.

(2)

.....

.....

.....

.....

DO NOT WRITE IN THIS AREA

DO NOT WRITE IN THIS AREA

DO NOT WRITE IN THIS AREA

DO NOT WRITE IN THIS AREA

DO NOT WRITE IN THIS AREA

DO NOT WRITE IN THIS AREA



(f) Explain **two** negative impacts of the rapid economic development of an emerging country on different age groups.

(4)

1

2



P 5 6 2 5 6 A 0 1 7 2 8

DO NOT WRITE IN THIS AREA

- DO NOT WRITE IN THIS AREA**

DO NOT WRITE IN THIS AREA

DO NOT WRITE IN THIS AREA

DO NOT WRITE IN THIS AREA

DO NOT WRITE IN THIS AREA

DO NOT WRITE IN THIS AREA

DO NOT WRITE IN THIS AREA

DO NOT WRITE IN THIS AREA

DO NOT WRITE IN THIS AREA

DO NOT WRITE IN THIS AREA

DO NOT WRITE IN THIS AREA

.....

.....

.....

.....

.....

.....

(Total for spelling, punctuation, grammar and use of specialist terminology = 4 marks)
(Total for Question 2 = 34 marks)

TOTAL FOR SECTION B = 34 MARKS



SECTION C

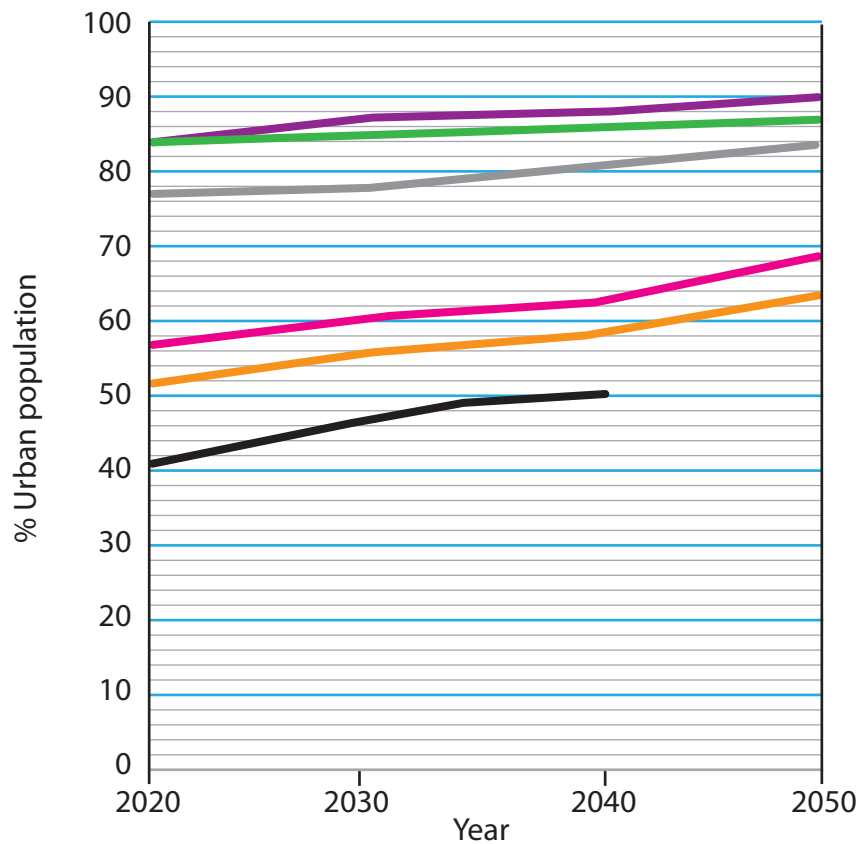
Challenges of an Urbanising World

Answer ALL questions in this section.

Write your answers in the space provided.

Some questions must be answered with a cross in a box ☒. If you change your mind about an answer, put a line through the box ☒ and then mark your new answer with a cross ☒.

- 3 (a) Study Figure 7 which shows projected global urbanisation trends, 2020 - 2050.



Key

World Asia Europe South America Africa North America

Figure 7

- (i) Between 2040 and 2050, the urban population of Africa is predicted to rise to 58%. Plot this information on Figure 7.

(1)



(ii) Identify the percentage of the world's population living in urban areas in 2020.

(1)

- ☐ A 47
- ☐ B 57
- ☐ C 67
- ☐ D 77

(iii) Explain **one** reason why the percentage of the world's urban population is projected to increase.

(2)

(b) Identify **two** characteristics of bottom-up development strategies intended to make megacities more sustainable.

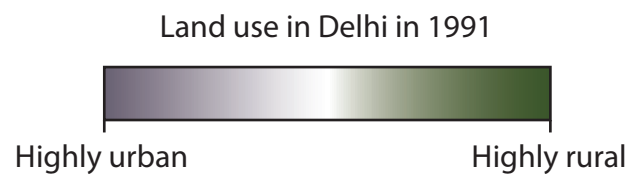
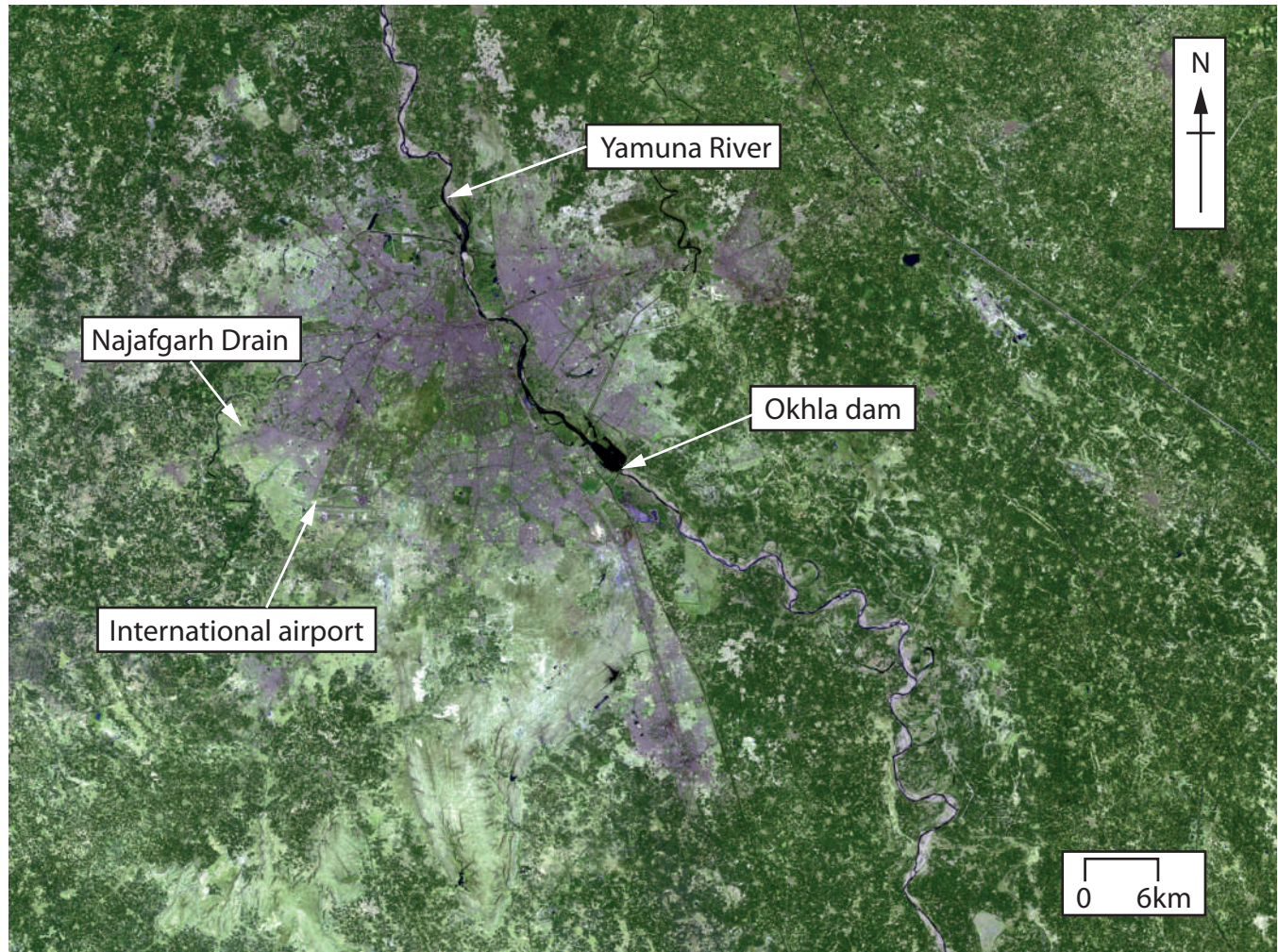
(2)

- ☐ A Projects funded by national governments
- ☐ B Large-scale, expensive projects funded by non-governmental organisations
- ☐ C Projects making use of cheap local materials, employing local people
- ☐ D Projects benefitting the whole country
- ☐ E Small-scale, low-cost projects where communities are involved in the decision making



P 5 6 2 5 6 A 0 2 1 2 8

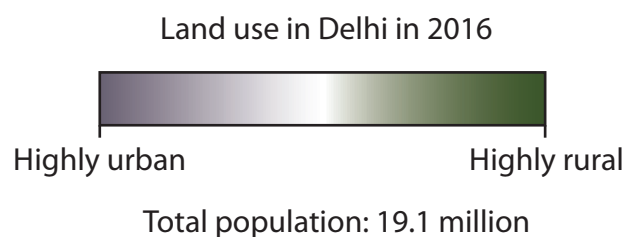
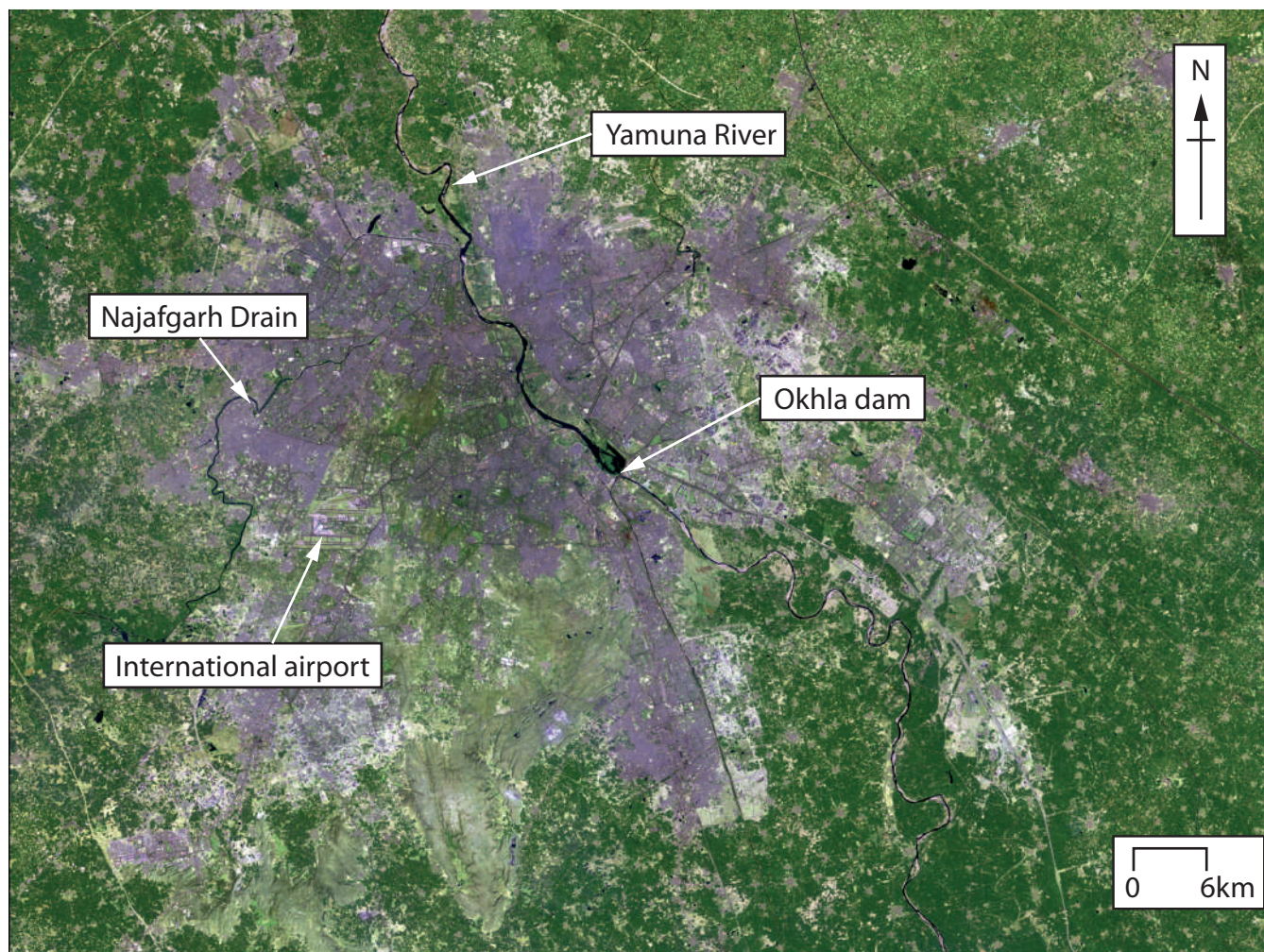
(c) Study Figures 8a and 8b which show satellite images of Delhi in 1991 (Figure 8a) and in 2016 (Figure 8b).



Total population: 9.4 million

Figure 8a





Key facts about Delhi (2016)

- Total population: 19.1 million
- In 2016 Delhi was declared the city with the world's worst air pollution.
- 52% of Delhi's population live in slums.
- Delhi produces 9,000 tonnes of solid waste per day.

Figure 8b



- (i) Calculate the percentage population increase of Delhi from 1991 to 2016.

Answer to **one** decimal place. Show your working.

(2)

..... %

- (ii) Using Figures 8a and 8b, describe the growth of urban land use in Delhi between 1991 and 2016.

(3)

.....

.....

.....

.....

.....

.....

- (iii) Using Figure 8b, explain **two** ways that rapid urban growth creates challenges for people living in megacities.

(4)

1

.....

.....

.....

.....

.....

2

.....

.....

.....

.....

DO NOT WRITE IN THIS AREA

DO NOT WRITE IN THIS AREA

DO NOT WRITE IN THIS AREA

DO NOT WRITE IN THIS AREA

DO NOT WRITE IN THIS AREA

DO NOT WRITE IN THIS AREA



(d) Analyse Figure 9 which shows the percentage population change in selected US cities, 2013 and 2014.

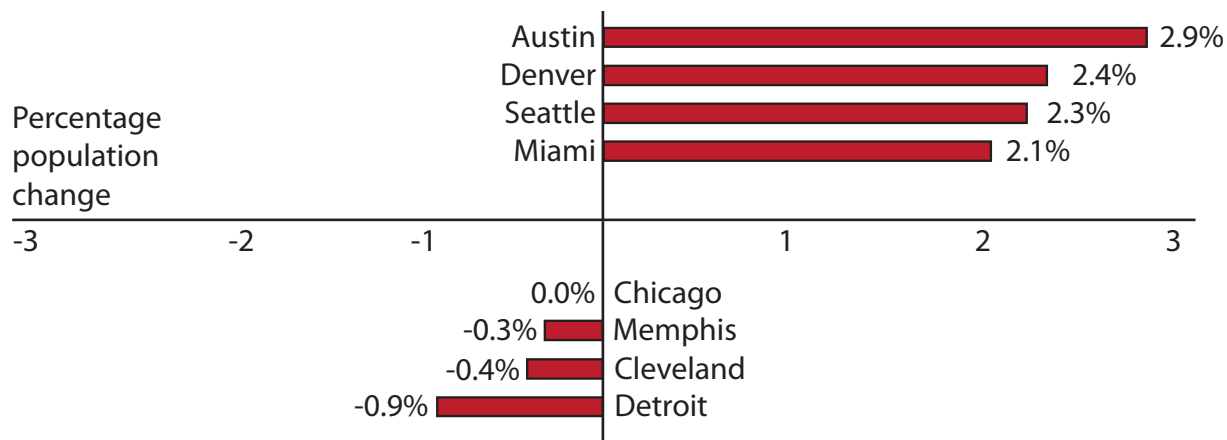


Figure 9

(i) Calculate the difference in percentage population change between Austin and Detroit.

(1)

..... %

(ii) Explain **one** reason why planning regulations can affect the growth of cities.

(2)

.....

.....

.....

.....



P 5 6 2 5 6 A 0 2 5 2 8

(e) Explain **two** reasons why de-industrialisation may occur.

(4)

1

2

(f) For a named megacity, evaluate the success of different top-down development strategies.

(8)

Named megacity.....



DO NOT WRITE IN THIS AREA

DO NOT WRITE IN THIS AREA

DO NOT WRITE IN THIS AREA

DO NOT WRITE IN THIS AREA

DO NOT WRITE IN THIS AREA

DO NOT WRITE IN THIS AREA

Handwriting practice area with 15 horizontal dotted lines.

(Total for Question 3 = 30 marks)

TOTAL FOR SECTION C = 30 MARKS
TOTAL FOR PAPER = 94 MARKS



DO NOT WRITE IN THIS AREA

DO NOT WRITE IN THIS AREA

DO NOT WRITE IN THIS AREA

BLANK PAGE

Pearson Education Ltd. gratefully acknowledges all the following sources used in the preparation of this paper:

Figure 5 © Transparency.org

Figure 8a and 8b sourced from:
<https://climate.nasa.gov/images-of-change?id=579#579-urban-expansion-in-new-delhi-india>

Every effort has been made to contact copyright holders to obtain their permission for the use of copyright material. Pearson Education Ltd. will, if notified, be happy to rectify any errors or omissions and include any such rectifications in future editions.

